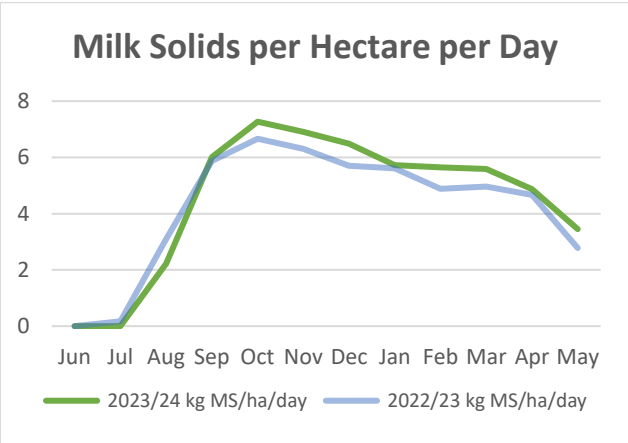
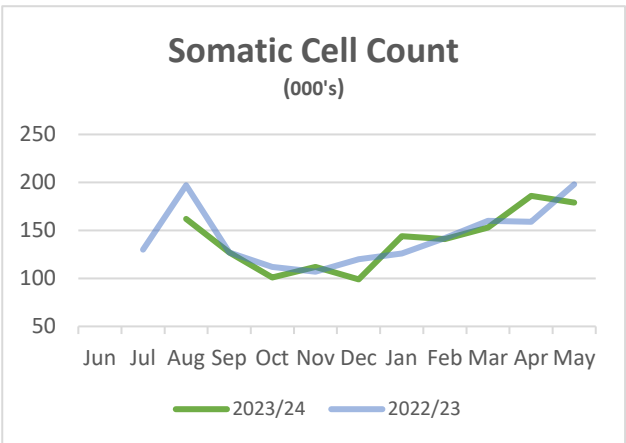
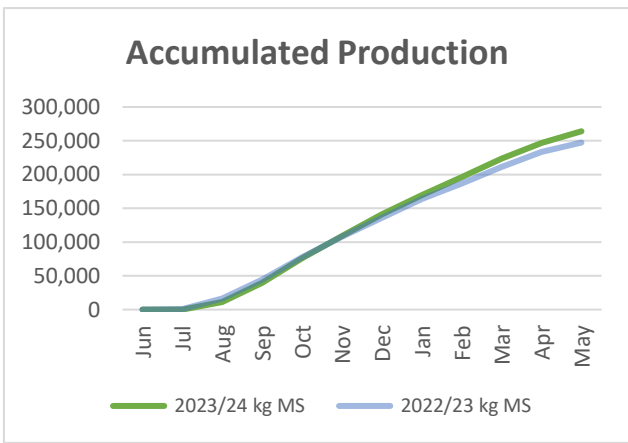
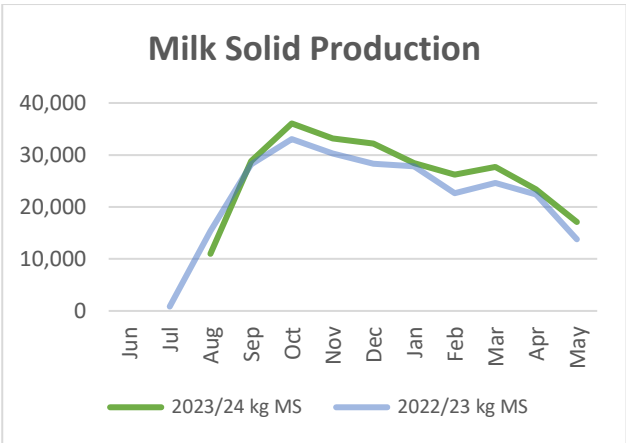


2023-2024 SEASON WRAP UP

MILK PRODUCTION

The 2023/24 season has now come to an end and all cows are now at winter grazing. The cows have milked reasonably well through May, averaging 1.29 kg MS/cow/day through May, which was 8.8% up from the May last season. Milk production did drop to 1.14 kg MS/cow in the last week of lactation; we dried off 27 May, which was 2 days prior to target due to reduced growth rate and hitting our target APC earlier than forecast.

The season has ended with our total production of 261,893 kg MS, which equates to 1,637 kg MS/ha and 468kg MS/cow based on peak cow numbers of 560. This is 5.9% ahead of last season and is 3,328 kg MS off our total 23/24 target (which is 5.9 kg MS/cow), so all in all not a bad season milk wise!



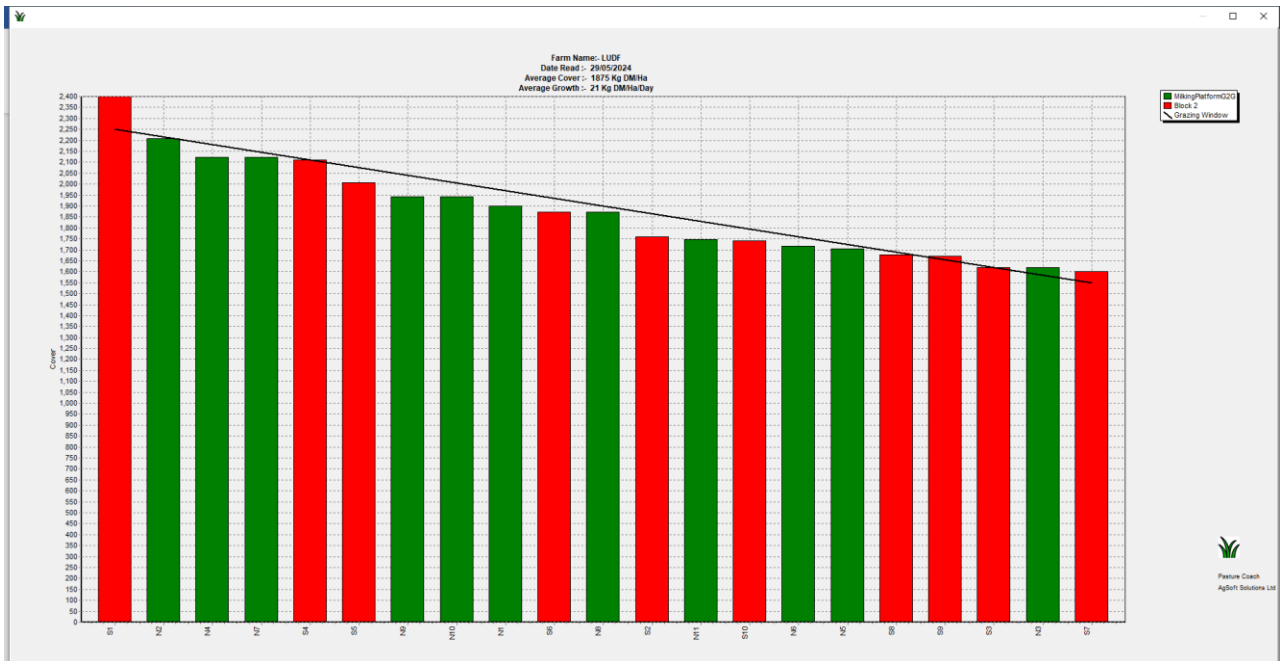
Our SCC was higher than we would have liked and averaged 199,000 for May, and our seasons average was 142,000. This is slightly better than last season where we averaged 143,000. Leading up to dry off we did culture 22 cows to confirm mastitis strain in herd and we did find Staphylococcus aureus in some samples. From these results we did amend our dry off plan using a longer acting intramammary for those cows that met the criteria around calving date. We used a combination of dry cow therapy and teat seal to minimise antibiotic use, whilst still ensuring the best pathway for cows that had a higher SCC and multiple cases of mastitis throughout the season.

We are currently reviewing our systems and processes with our vet to see risk areas and look for improvements. We will report our findings once complete.

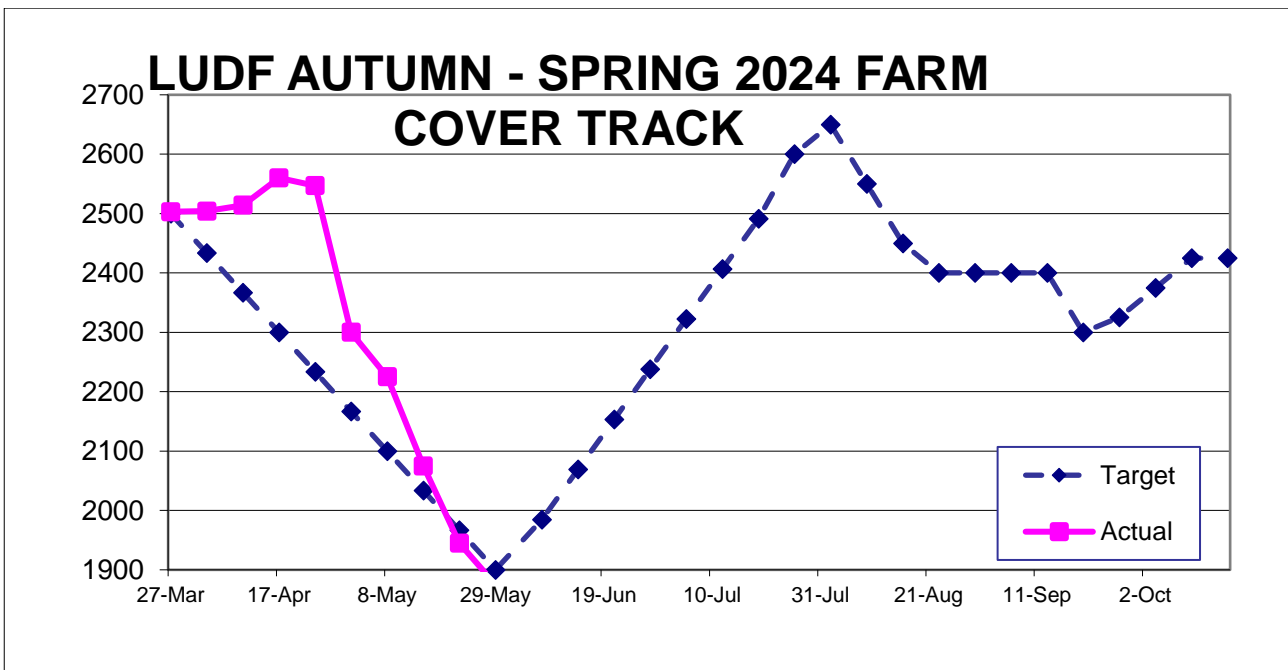
PASTURE & FEED

Pasture growth for May averaged 25 kg DM/ha, while our herd demand averaged 45 kg DM/ha. Our average growth rate for May is 30kg DM/ha, however due to early frosts we saw three weeks with an average of 21.3 kg DM/ha. We fed 16.5 kg DM/cow/day for May until dry off where they were reduced to 14 kg DM/ha. Due to the heavier soils on our farm we aim to feed no silage in May, however due to lower growth rates we did feed an average of 2 kg DM/cow/day for that month. APC at dry off was 1,875 kg DM/ha, our target was 1900 kg DM/ha.

Current Feed Wedge 29 May 2024

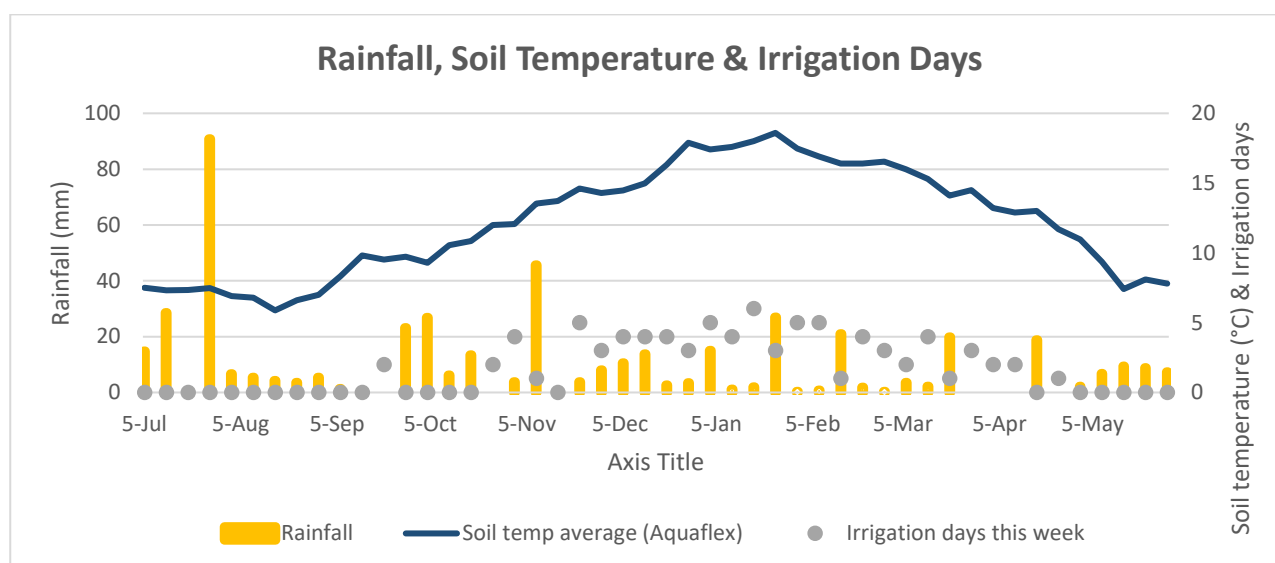


Autumn Feed Tracker



IRRIGATION

We irrigated through to the last week of April, with a total of 83 days of irrigation. Rainfall from July to April 2024 was 436.2 mm. Soil temperature has averaged 12.1°C for our reporting period (Jul-Apr) and was 8.1°C for May.



LIVESTOCK

Body Condition Score:

We completed our last BCS for the season on 16 May with a herd BCS average of 4.4. We used this information for selective drying off of lower BCS cows and also for wintering mobs. We had 18 2yo at 4.0, 25 3yo at 4.0 and 2 3yo that were at 3.5, which highlights the importance of monitoring BCS to ensure targets are met. We selectively dried off 28 cows from this report prior to final dry off, this consisted of 2 MA cows that had a BCS of 3.0 & 3.5 and 26 R2's and R3's with a BCS of 4 with an earlier calving date. They remained on farm until the herd was dried off and were fed a pasture/baleage diet. Ideally, we would not have R2's & R3's fall below 4.5 and MA below 4.0. We are however confident we will achieve pre calving targets.

For the season, we did hold our average BCS above the optimal herd average since calving, however we did fall behind slightly in May, which will continue to be a focus criterion for the farm.

Wintering:

All cows are now dry and have moved to our winter grazier in Hororata. They have been transitioned onto kale. We transition our cows onto kale by increasing the proportion of kale in the diet over their first week, with the balance diet being ryegrass straw (and baleage once transitioned). We consider kale to be a safe crop, however we do this to ensure rumen microbes can adjust to the change in diet as to not effect the cows health and to aid in liveweight gain. We have mobbed the cows into heavy, mid and light cows with consideration of calving date. See mob size and feeding regime below.

Once cows are transitioned all mobs will receive 2 kg DM/cow/day of baleage, with the balance being kale. Cows will be offered the below amount; however we do expect intakes to reduce as cows get closer to their calving date.

Winter grazing mob numbers and allocation as per body condition score:

Mob	Number	BCS	Feed Allocation	Utilisation
Light	177	4.0	16 kg DM/cow/day	70%
Mid	230	4.5 & 4.0 (lates)	14 kg DM/cow/day	75%
Heavy	48	5.0 +	10.5 kg DM/cow/day	80%
IC Heifers	129	5.5	12 kg DM/cow/day	80%
Average	581		13.12 kg DM/cow/day	

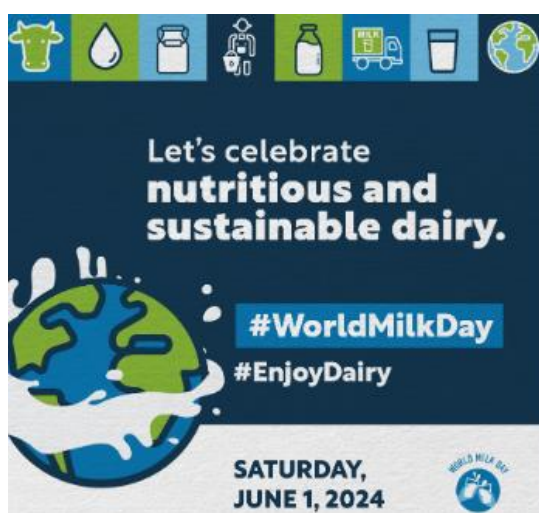
Cows will be checked a minimum of twice per week and we will continue to look for any cows that may have mastitis or that are lame. We will note any change in BCS on the mobs, and if any animals deviate from their mob and address if needed. We will BCS all stock at least once while at our winter grazier to ensure we pick up any that have dropped BCS. If any animals do drop in condition score they will be removed from their mob and put into a separate mob to ensure pressure is taken off them and that they don't need to integrate into a new mob over winter, which can cause further weight loss.



Cows will come back to a lease block close to the farm, we expect this to be on or around 15 July where we will remove earlier calving cows and mob accordingly. Springers will calve down on East Block, our calf rearing block, across the road from LUDF.

WORLD MILK DAY

What did you do to celebrate world milk day?



World Milk Day is a day to celebrate the dairy sector and the benefits milk brings to the world. Milk plays a vital role in nutrition as an accessible, affordable, nutrient dense food that helps with a balanced diet across the world.

Not to mention the part it plays in the New Zealand economy. Dairy contributes in excess of \$25B into the New Zealand economy. That is one in every 4 export dollars and employs almost 55,00 people around NZ.

#WorldMilkDay #EnjoyDairy #LUDF

WHAT'S COMING UP

Staff changes – with the change of season we say goodbye to our 2IC Cody Mulligan. Cody has been with LUDF for 3 seasons and has been a valued member of our team. Cody moves on to a new role with Ecolab and we wish him every success in the future.

We also welcome Patricio Ortega who has joined LUDF as our new 2IC. Patricio has spent the last 10 years dairy farming in Southland, and we look forward to him contributing his knowledge to LUDF.

Annual Leave! It is a time for our staff to take a well-deserved break and rest up before the first calf drops – but it's too early to talk about that.

Team get-together – This is a great time to bring the staff together, particularly with staff movements, to discuss the season that has been and looking forward to the challenge of the new season.

Checking stock – we will get to our stock twice a week to ensure their transitioning well, there are no health concerns and to ensure feeding levels and residuals/wastage are where we expect them to be.

Farm maintenance – we will focus on getting those little jobs done, making sure everything is set up before calving to make it as easy as it can be.

	KEY WEEKLY INFO	Last Week	This Week	1 Year Ago
		22-May-24	29-May-24	29-May-23
Farm Area	Grazing area (Ha)	160	160	160.00
	Re-grassing (Ha)	0	0	0.00
Stock Numbers	Cows currently milking to vat	417	0	404
	Cows currently milking NOT to vat	3	0	5
	Total cows milking	420	461	409
	Once-a-day milking cows	2	0	409
	Lame cows current	2	0	12
	Dry cows on farm	33	0	38
Milk Production	Current bulk milk SCC (tgt below 150) (SCC)	206	228	207
	Milk Solids per cow (kg MS/cow)	1.24	0.00	1.01
	Protein:Fat ratio (%)	0.81	0.78	0.83
Feed Budget	Average pasture cover (kg DM/Ha)	1946	1875	1740
	Current Pasture Fed - Milkers (kg DM/cow)	11.24	14.3	14.5
	Current Silage Fed - Milkers (kg DM/cow)	4.76	1.7	2.95
	Current Demand per cow (kg DM/cow)	16	16	11.98
	Stocking Rate - Milkers (Cows/Ha)	2.83	0	2.79
	Current Pasture Demand - Milkers (kg DM/Ha)	45	0	0
	Pasture Growth Rate (kg DM/Ha)	22	21	16
	Pre-grazing cover (avg for week) (kg DM/Ha)	2659	2462	0
	Residual (avg for week) (kg DM/Ha)	1500	1500	1500
	Round Length (Days)	28	24	18
Farm Conditions	Soil temp average (Aquaflex) (degree C)	8.1	7.8	9.7
	Rainfall (mm)	8.8	7.4	0
	Irrigation days this week (days)	0	0	0
People	Current Roster	5+2	5+2	5+2
	Health & Safety Incidences	nil	nil	nil
	Milking Routine	10 in 7	10 in 7	10 in 7