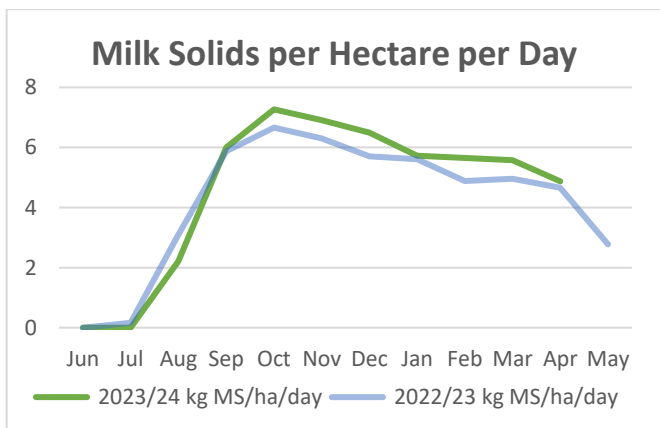
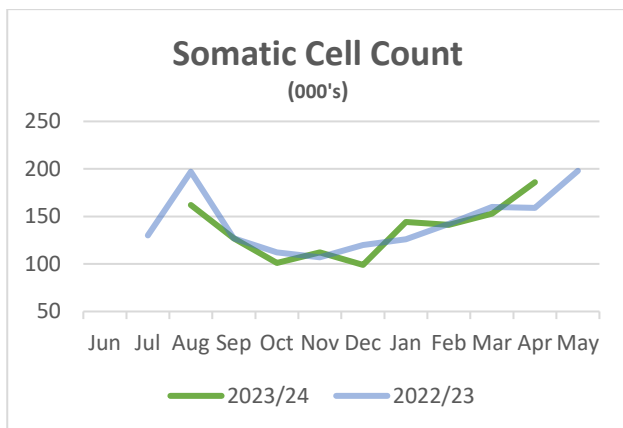
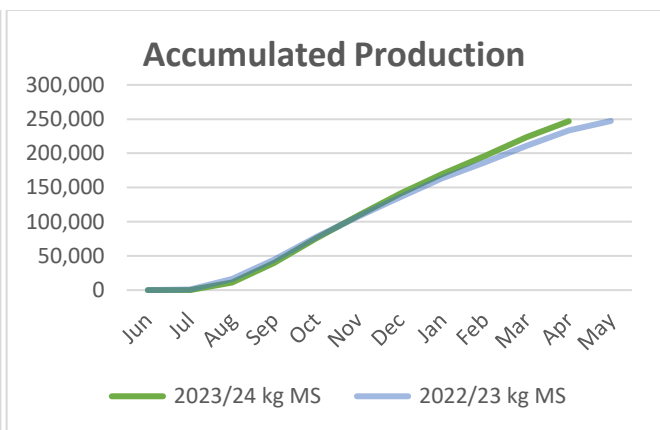
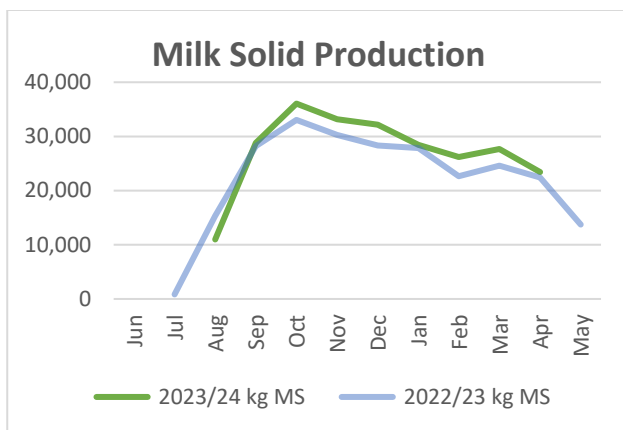


WHAT'S BEEN HAPPENING ON LUDF ?

MILK PRODUCTION

April's production has continued well, with an average of 1.49 kg MS/cow/day through April. Milk for April is up 4% compared to last season and we are now sitting at 5% ahead of last season. SCC has increased to 186,000 for April. We are currently on target to produce 264,901 kg MS which equates to approx. 473 kg MS/cow which is what we had budgeted.

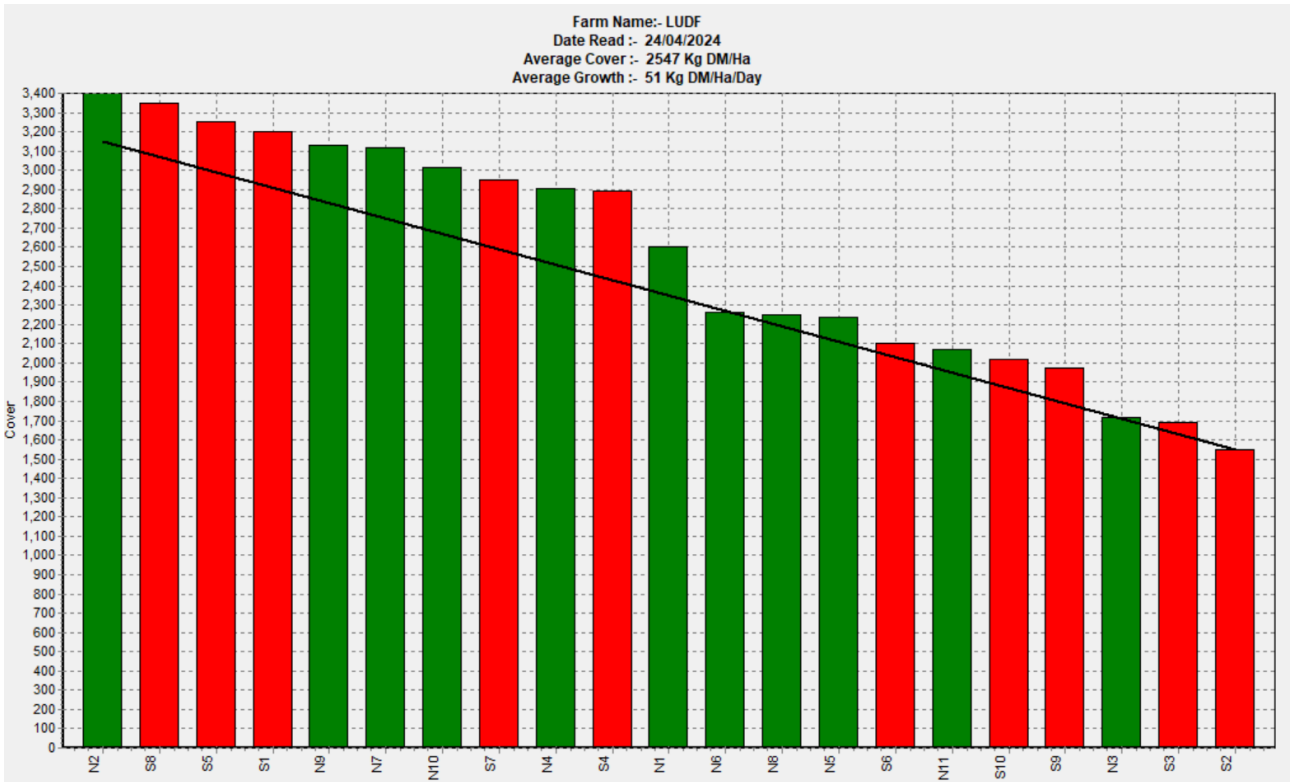
We have now removed the final 90 cull cows, of which 37 were empty and 47 were discretionary culls (for SCC, repeat mastitis, repeat lameness, low production and age. There were also 6 Johnes Disease, we still have 16 culls to go 14 young empties that will be sold and carried over and 2 lame cows. This has increased our BW to 283/50 and PW to 332/76, from 277/50 and 314/76 respectively.



PASTURE & FEED

Pasture growth for April has averaged 52 kg DM/ha, while our herd demand averaged 58.5 kg DM/ha. We were feeding 17.5 kg DM/cow/day for April (grass and silage) and are now allocating 16.5 kg DM/cow of grass. We have now removed silage from the diet as we currently have the desired cover to hit our target dry off target of 1900 kg DM/ha. LUDF's autumn strategy is to build cover over March to ensure we remove silage in May. Due to heavier soils and often rain in May, we look to minimise pasture damage through feeding out and to minimise wastage.

Current Feed Wedge

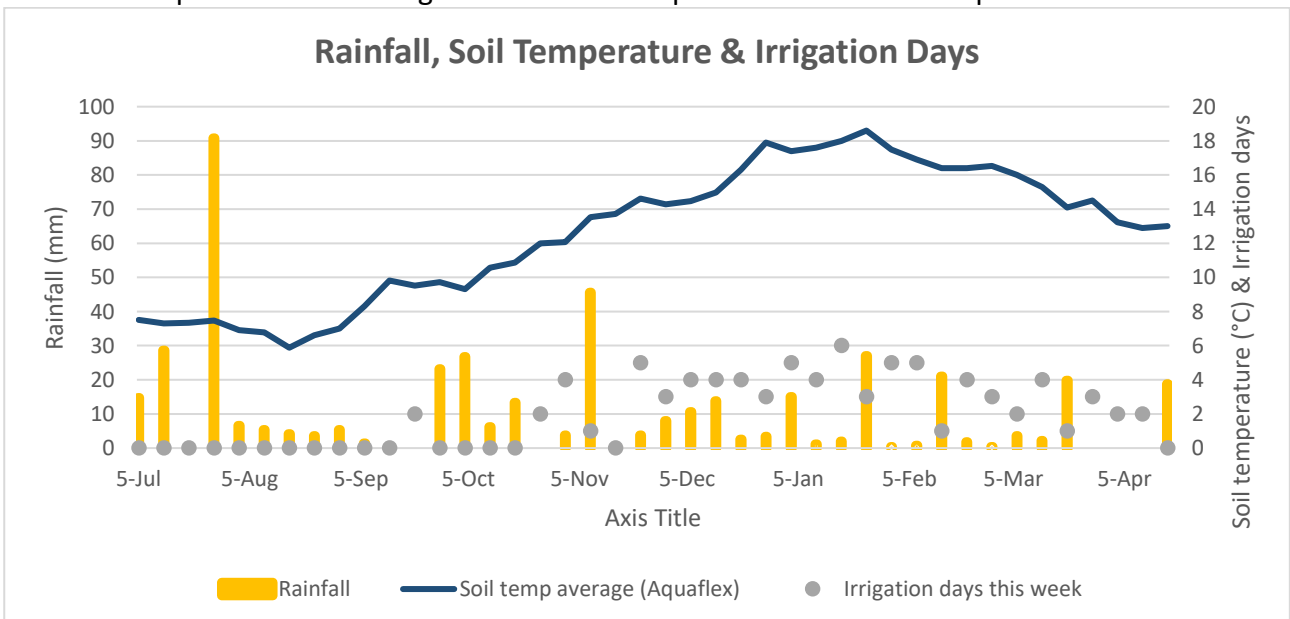


NITROGEN USE

Our nitrogen target is 190 kg N/ha, and we have used an average of 182.7 kg N/ha to date. Our highest rate to is 196 kg N/ha, we note this was a silage paddock.

IRRIGATION

We have now turned the irrigators off with a total of 83 days of irrigation. Rainfall Jul-Apr is 436.2 mm. Soil temperature has averaged 12.6°C for Jul-Apr and 15.0°C for Feb-Apr.



LIVESTOCK

The milkers will be dried off end of May, current forecast is 30 May and moved to winter grazing in Hororata once dried off. We have a target average BCS at dry of 4.5 and will mob MA cows into groups based on BCS to enable cows to meet their liveweight targets over winter to achieve our targets of 5.0 for MA cows and 5.5 for R3s and in calf heifers. MA & R2's will return to our local grazing block on approximately 15 July, and they will be drafted into calving dates. All stock will be wintered on kale this winter.

Our R1's have now moved to grazing in Hororata (113 head) and our R2's are being mobbed for winter (129 head).

Our R1's & R2's have been weighed and animal health administered for the winter. The R1's received 7 in 1 vaccine and B12 and received a drench. Their average weight was 222 kgs on 19 April, and the R2's received a drench, leptospirosis vaccine, iodine and B12 and were an average weight of 436 kgs on 9 April.

Of the R2's, the 107 that are on target will be fed 12 kg DM/day and the lighter mob of 22 animals will be separated and will be preferentially fed to ensure they met their pre calving target, or get as close as they can.



Winter grazing allocation as per body condition score:

Mob	Number	BCS	Feed Allocation	Utilisation
Light	100	4.0	16 kg DM/cow/day	70%
Mid	252	4.5 & 4.0 (lates)	14 kg DM/cow/day	75%
Heavy	100	5.0 +	10.5 kg DM/cow/day	80%
IC Heifers	129	5.5	12 kg DM/cow/day	80%
Average	581		13.12 kg DM/cow/day	

WHAT'S COMING UP

Our focus has now moved to dry off. We will use our latest herd test to determine which cows require dry cow therapy, with the balance being teat sealed. This is to ensure we are minimising our antibiotic use.

We continue to finalise our 2024/25 Farm Plan and Budget, which will be made available.

The South Island Dairy Event - [SIDE](#) is coming to Lincoln University and is celebrating their 25th event. There will be a range of workshops ranging from managing a team, winter grazing, health, safety & wellbeing, livestock genetics and personal growth and career planning. There will also be a field trip to Lincoln University Research Farms and not to mention [BrightSIDE](#) for our future decision makers.

FOCUS DAYS

We held our Autumn Focus Days in Methven & Eyrewell Forest, where we had over 150 farmers and rural professionals attend. The focus day covered LUDF's reproduction project, along with national and regional repro results and stats from LIC, as well as review of LUDF's 10 in 7 milking regime. It was also an opportunity to hear from two local farmers and their approach to flexible milking. You can find the handout [here](#).





FARM VISITS

We hosted a group of Australian dairy farmers and rural professionals as part of their study tour with the [Gardiner Foundation](#). As part of their tour they were looking at different farm systems, technology use in New Zealand and to gain an appreciation of the environmental landscape New Zealand farms in.



	KEY WEEKLY INFO	Last Week	This Week	1 Year Ago
		24-Apr-24	1-May-24	1-May-23
Farm Area	Grazing area (Ha)	160	160	151.72
	Re-grassing (Ha)	0	0	8.28
Stock Numbers	Cows currently milking to vat	506	505	469
	Cows currently milking NOT to vat	3	4	2
	Total cows milking	509	509	471
	Once-a-day milking cows	6	4	6
	Lame cows current	6	4	6
	Dry cows on farm	2	2	0
Milk Production	Current bulk milk SCC (tgt below 150) (SCC)	163	177	178
	Milk Solids per cow (kg MS/cow)	1.41	1.49	1.34
	Protein:Fat ratio (%)	0.79	0.8	0.8
Feed Budget	Average pasture cover (kg DM/Ha)	2547	-	2382
	Current Pasture Fed - Milkers (kg DM/cow)	11.95	16.7	13.05
	Current Silage Fed - Milkers (kg DM/cow)	4.75	0	3.45
	Current Demand per cow (kg DM/cow)	16.7	16.7	16.5
	Stocking Rate - Milkers (Cows/Ha)	3.19	3.19	3.47
	Current Pasture Demand - Milkers (kg DM/Ha)	53	53	45
	Pasture Growth Rate (kg DM/Ha)	50	-	43
	Pre-grazing cover (avg for week) (kg DM/Ha)	3428	3353	3331
	Residual (avg for week) (kg DM/Ha)	1550	1550	1600
	Round Length (Days)	37	38	41
Farm Conditions	Soil temp average (Aquaflex) (degree C)	11.7	10.97	11.6
	Rainfall (mm)	0	2.2	7.6
	Irrigation days this week (days)	1	0	0
People	Current Roster	5+2	5+2	5+2
	Health & Safety Incidences	nil	nil	nil
	Milking Routine	10 in 7	10 in 7	10 in 7